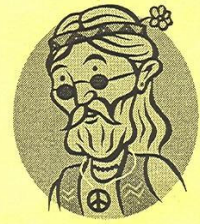


Petaluma Yacht Club
"Feelin' Groovy!"
Memorial Day 2008



*Hey all you groovy guys and gals!
Time for another far-out weekend at Petaluma Yacht Club!!*

Here's How It Works:

Book Your "Adventure Pass" by Advance Reservations and Pre-Payment Only!

- ♥ \$50 Adventure Pass includes everything on the Event Schedule
- ♥ \$20 for kids 12 and under
- ♥ Per event pricing is not available
- ♥ Only 150 pre-paid reservations will be accepted, so RSVP early!
- ♥ One check for your group - the deadline is Friday, May 16th

Here's What You Get:

Event Schedule

- ♥ Friday 5/23 - 5 to 6PM - "60s Theme Drink Contest" and potluck appetizers *
- ♥ Saturday 5/24 - 9 to 11AM - "Continental Breakfast"
- ♥ Saturday 5/24 - 7PM - "Awesome BBQ Dinner and Far-Out Raffle"
- ♥ Saturday 5/24 - 8:30PM - "Groovy Talent Contest"
 - ♥ Sunday 5/25 - 9 to 11AM - "Brunch"
 - ♥ Sunday 5/25 - 2 to 5PM - "Groovy Games"
 - ♥ Sunday 5/25 - 5PM - Winning Team's "Beer Weigh-In"

* Each YC please bring one appetizer to share

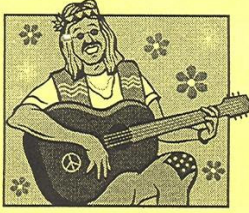
Here's Who You Can Call:

Event Chair: "Hippie Chick" Gail Swift
(707) 781-3800
gail@swifthomes.com

Rear Commodore: "Hippie Girl" Francesca Smith
(707)484-6889
francesca@mckenzieone.com

So, Man, What Do I Do Again?

- ♥ Get the word out in your newsletter
- ♥ Hang the poster at your clubhouse
- ♥ Fill out the RSVP form
- ♥ Send us one check for your group by May 16th
- ♥ Call Gail or Francesca with questions
- ♥ Contact Petaluma Visitors Program for Bridge Opening information
- ♥ Start practicing your talent "Act" for the show!
- ♥ Get a team together for the "Groovy Games"!



Petaluma Yacht Club "Feelin' Groovy!" Memorial Day 2008

Talent Show Details:

- ♥ Sign up in groups or as a 'solo' performers - get as many acts together as you can!
- ♥ Time limit is five minutes per act
- ♥ Return the enclosed introduction card - our emcee will announce each act
- ♥ We need one "Judge" from each YC
- ♥ Please keep in mind - children will be in the audience for the show!
- ♥ Feel free to make copies of the entry form for more acts!

More Helpful Information for Your Cruise- In...

♥ City Dock & "D" Street Bridge Opening Information:

www.visitpetaluma.com

(707) 769-0429

There's no "reservation system" at the city docks - it's first come, first docked. Docks can handle over 60 boats. You must call ahead for bridge openings.

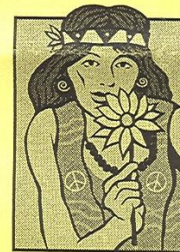
♥ Clubhouse Hours of Operation:

- Friday - open at 3PM
- Saturday - open at 8AM
- Sunday - open 8AM
- Monday - open at 8AM

Please Note: Clubhouse
shower facilities will be
available daily
from 8AM - 3PM only!

♥ PYC Bar Hours of Operation:

- Friday - 3PM - Midnight
- Saturday - 9AM - Midnight
- Sunday - 9AM - Midnight
- Monday - 9AM - Noon



What To Do When You Arrive at the Turning Basin:

- ♥ Check in at the Adventure Pass Desk to sign in and pick up event wrist bands
- ♥ Name tags must be worn to be served at the bar
- ♥ Pay city docking fees - \$20 per boat per day (we'll show you where to drop off your check)